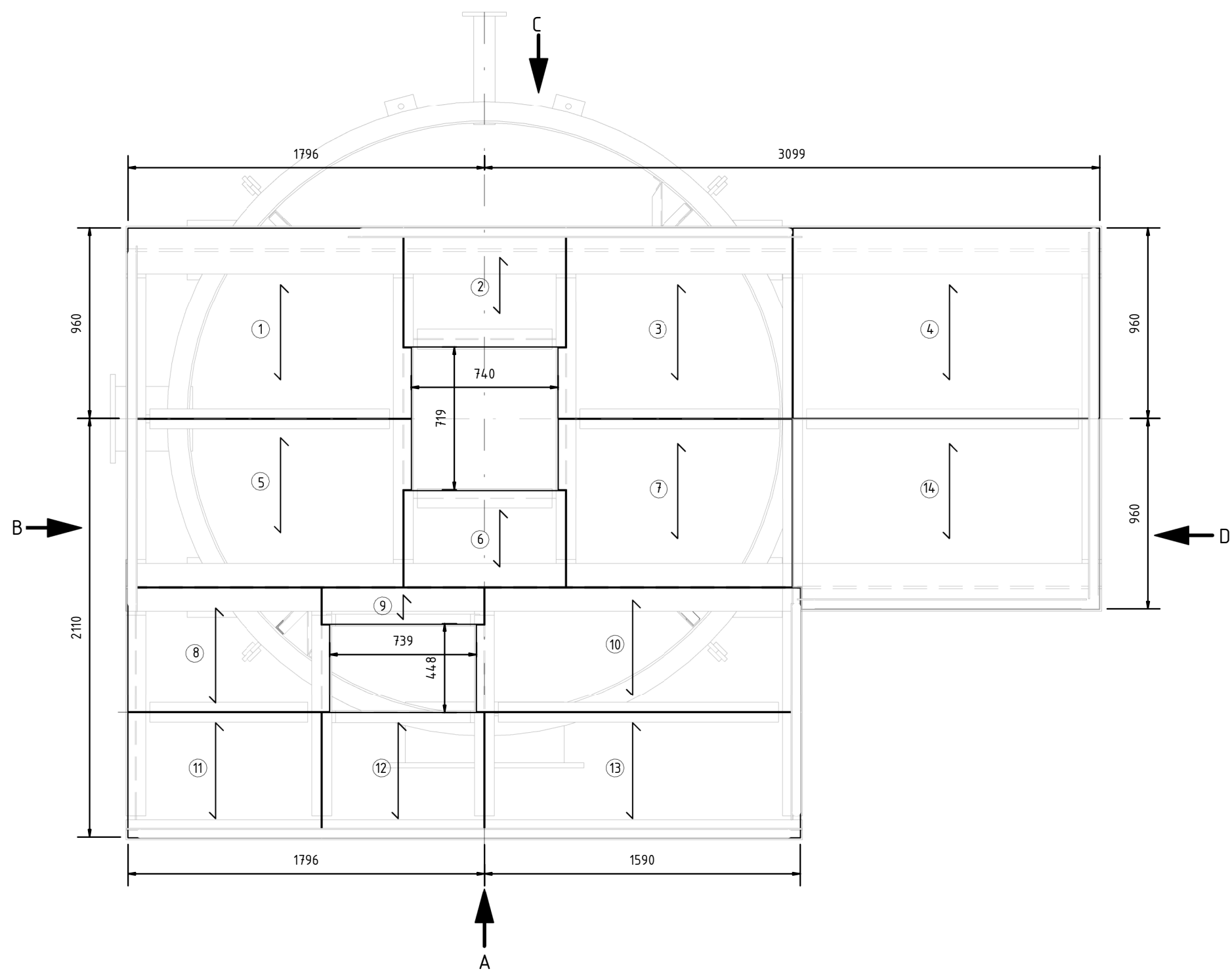
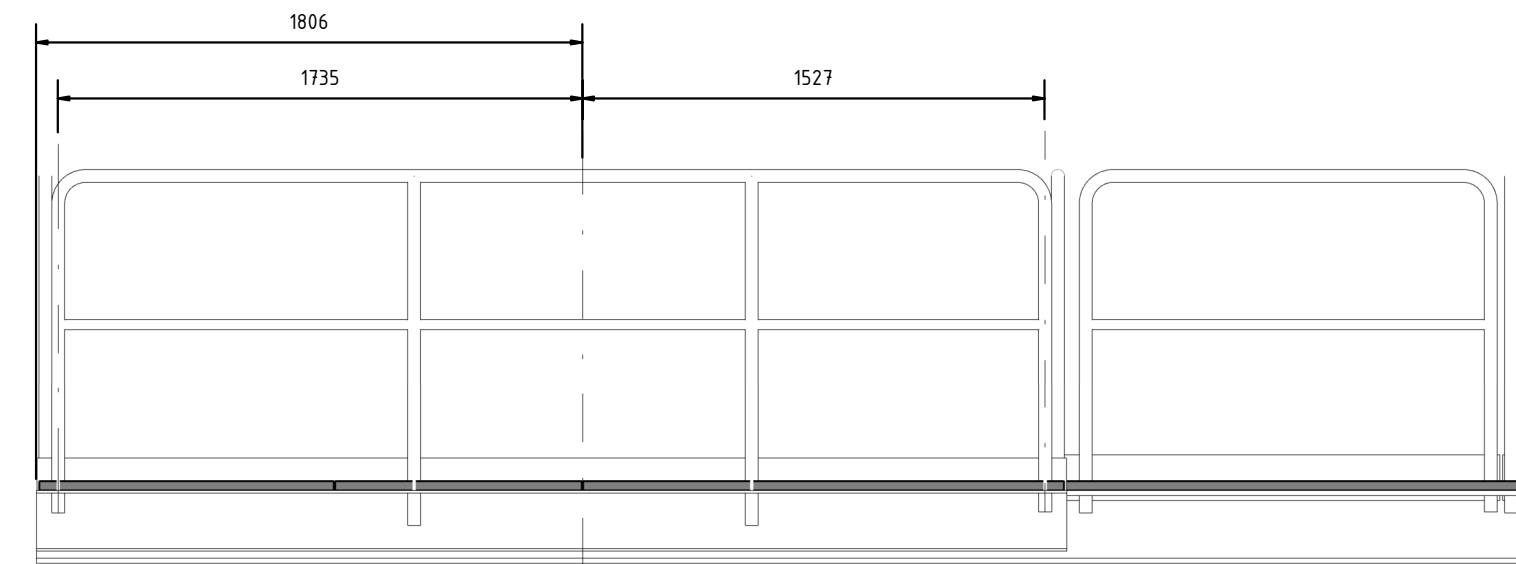
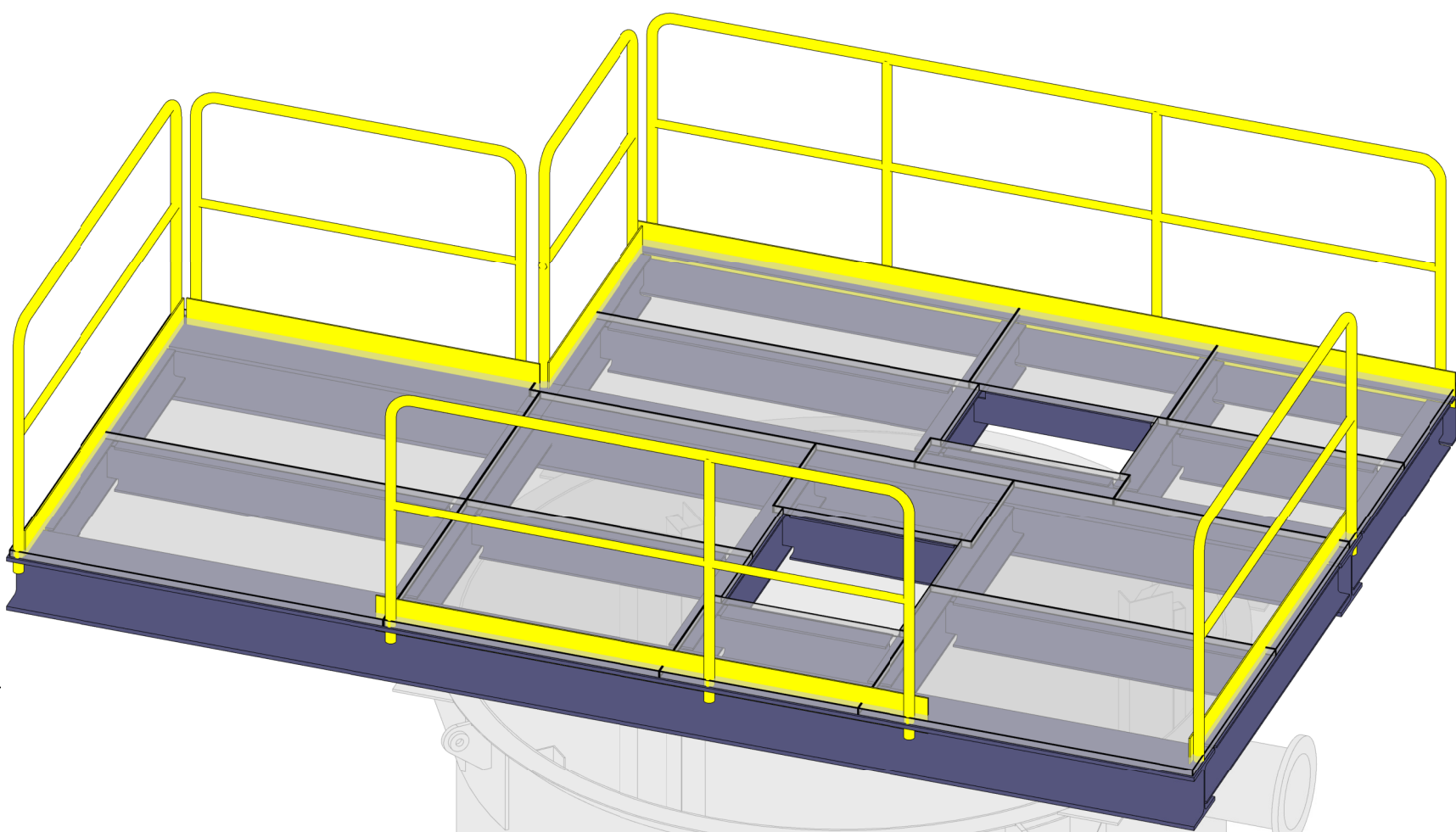
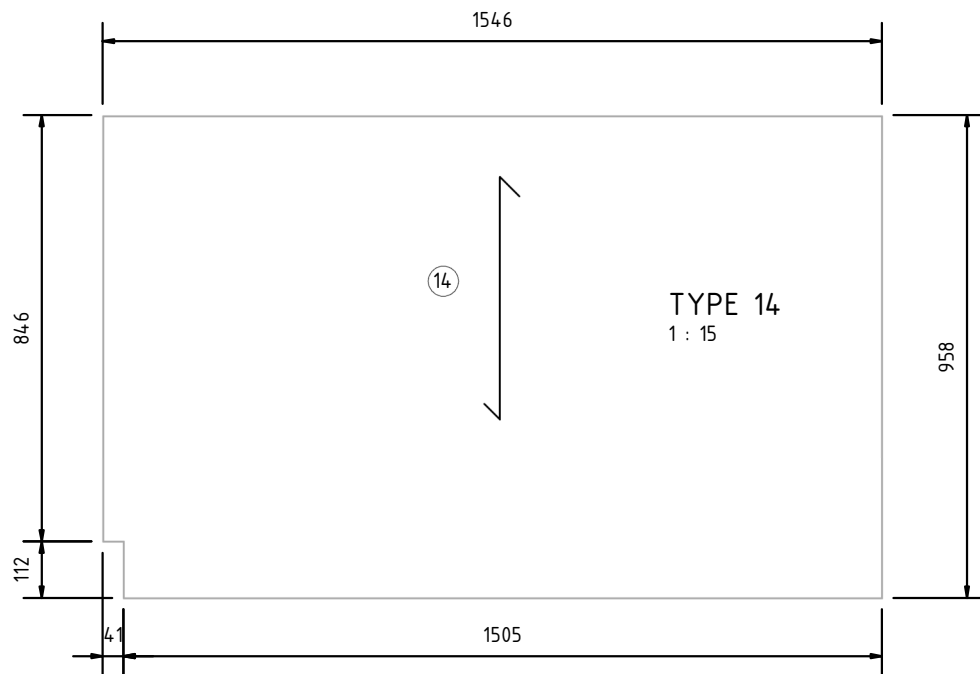
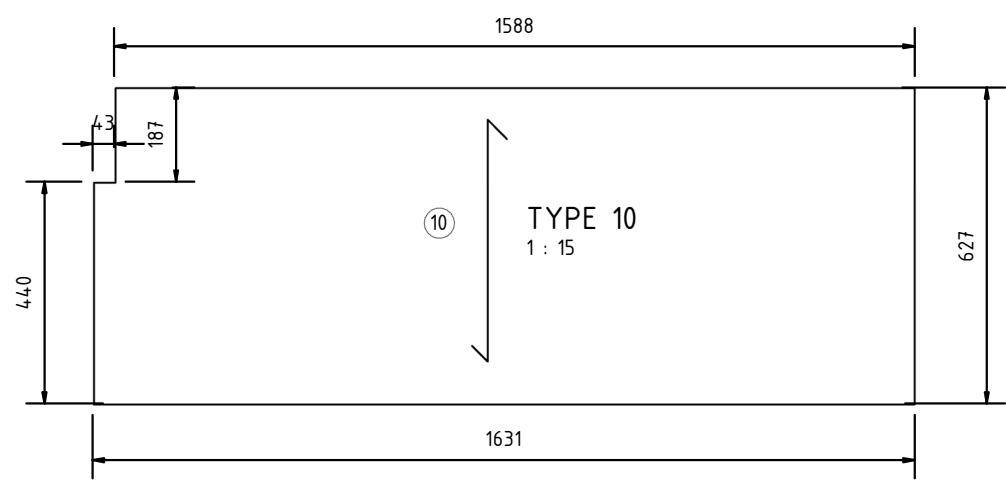
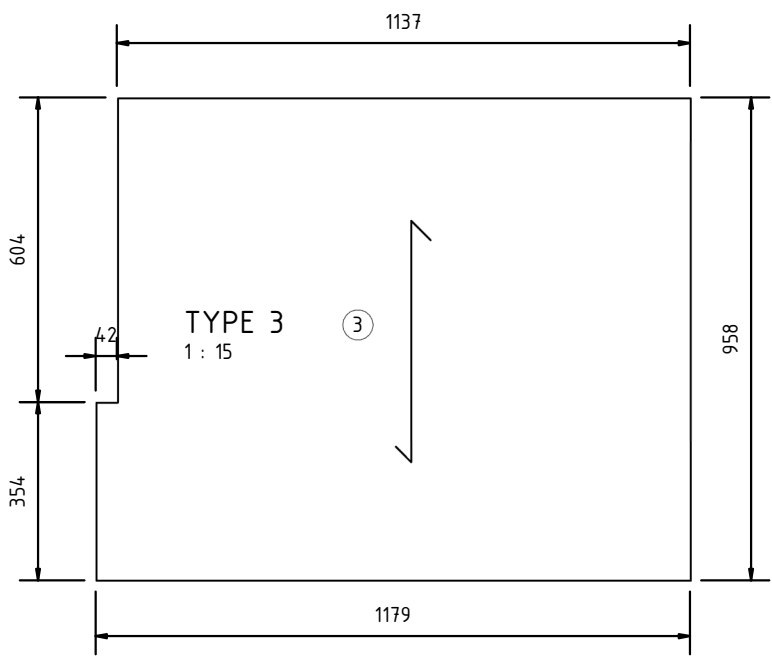
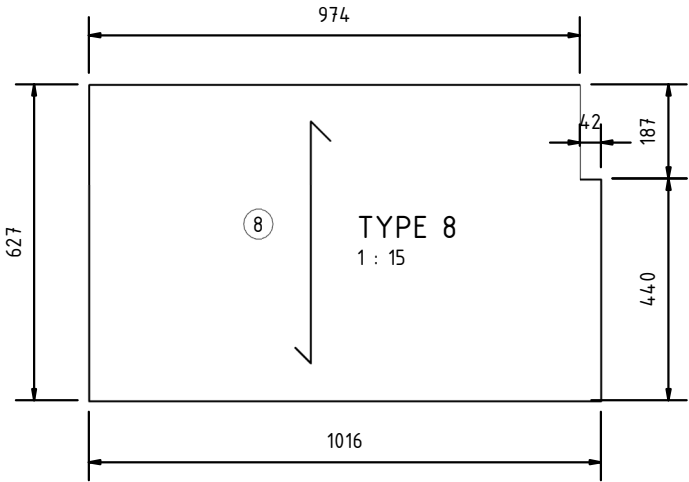
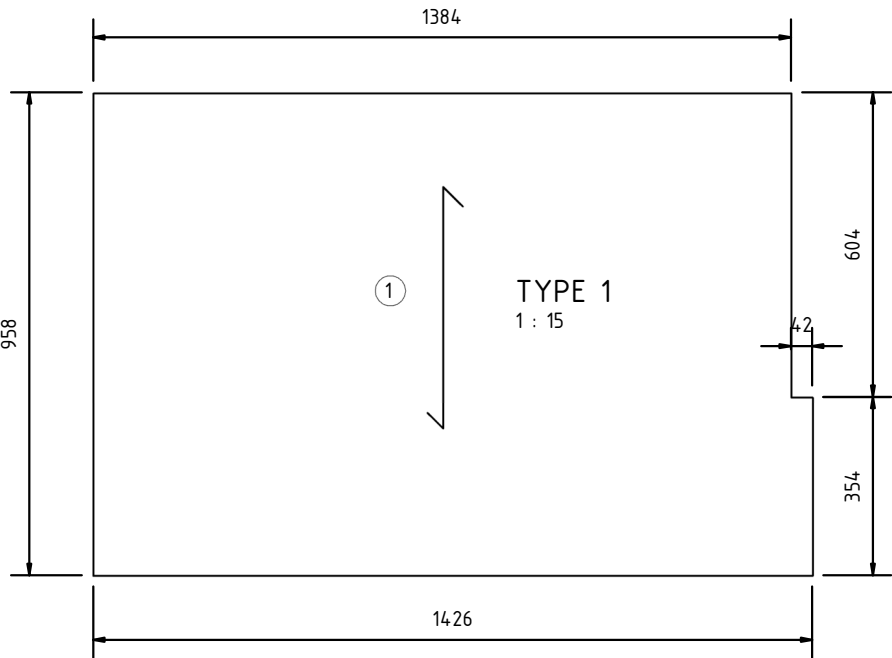
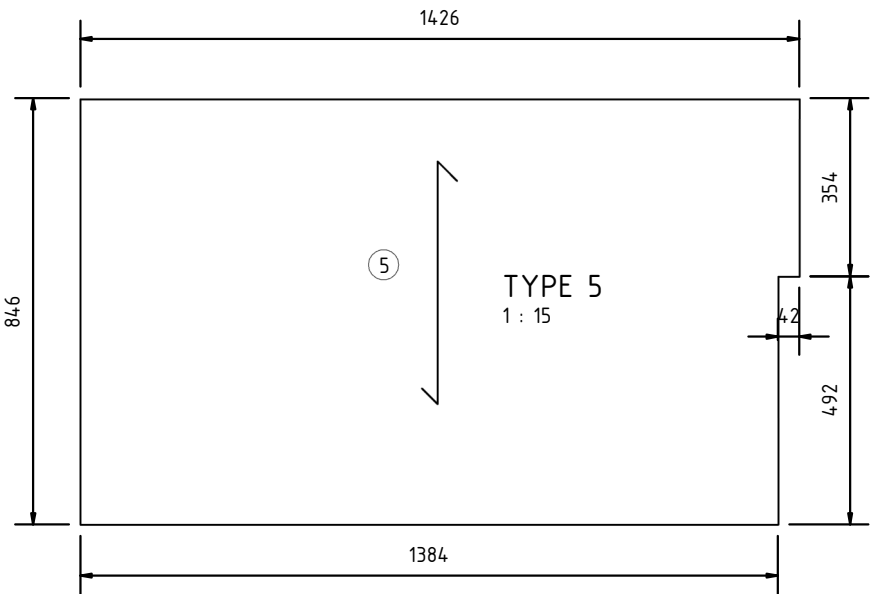


G
F
E
D
C
B
A
A1

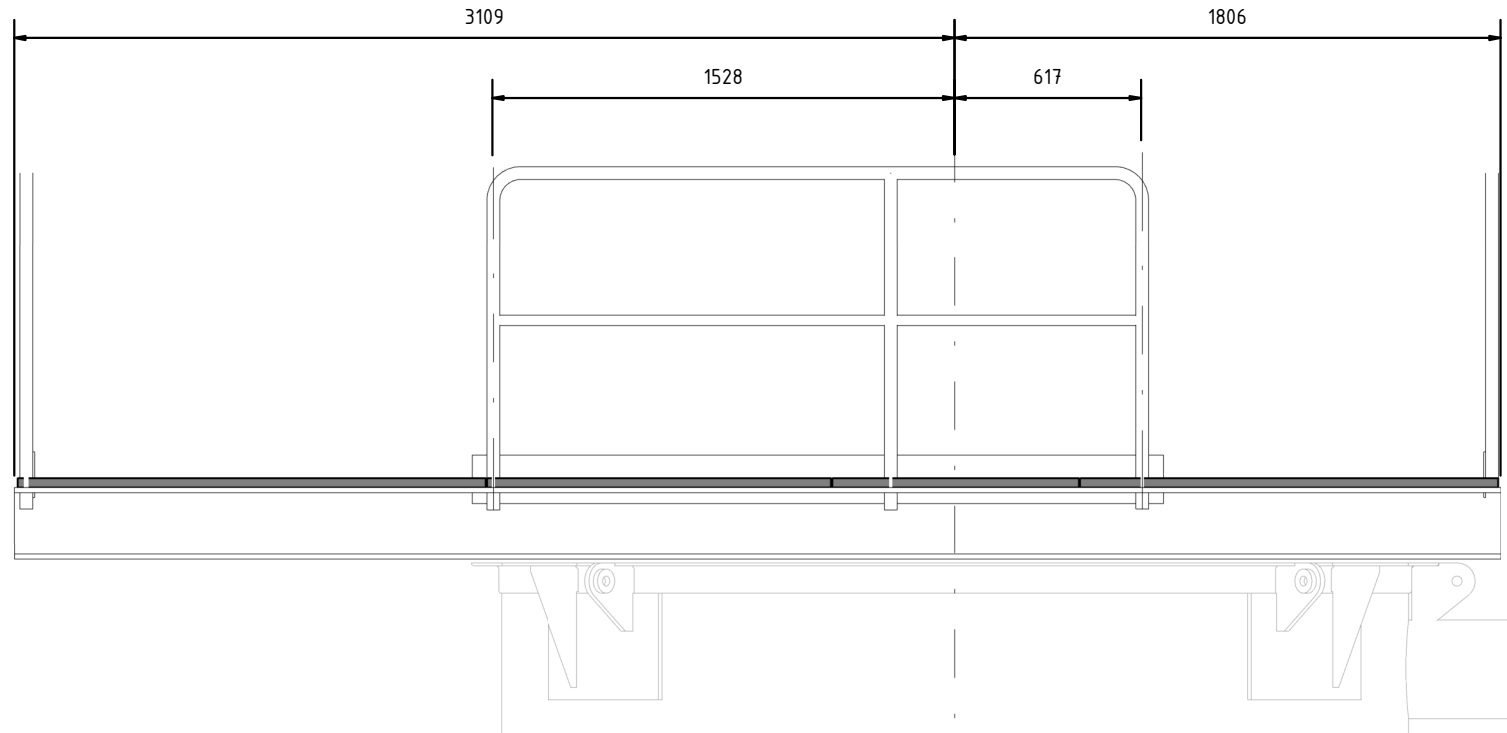


PLAN VIEW GRATING AND RAILING
1 : 25

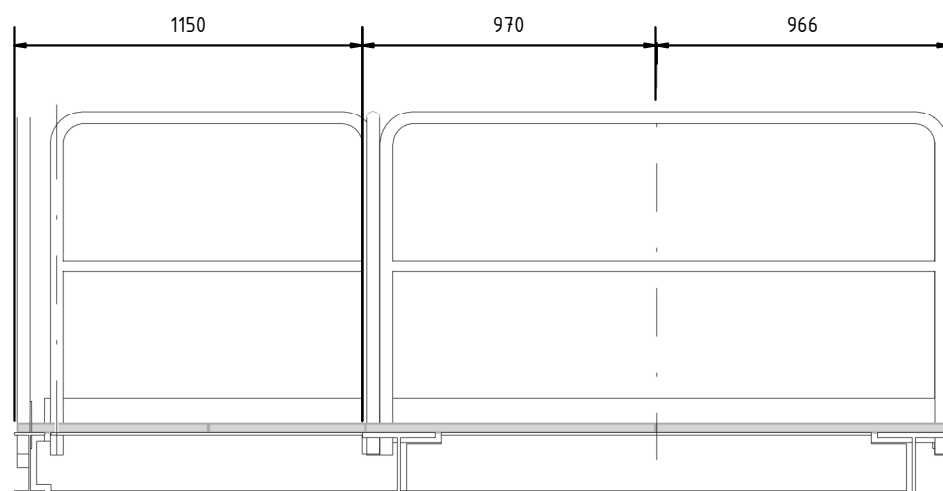
Nº	A	B	UNITS
2	816	600	1
4	1546	958	1
6	816	488	1
9	816	183	1
10	974	627	1
12	816	627	1
13	1588	627	1



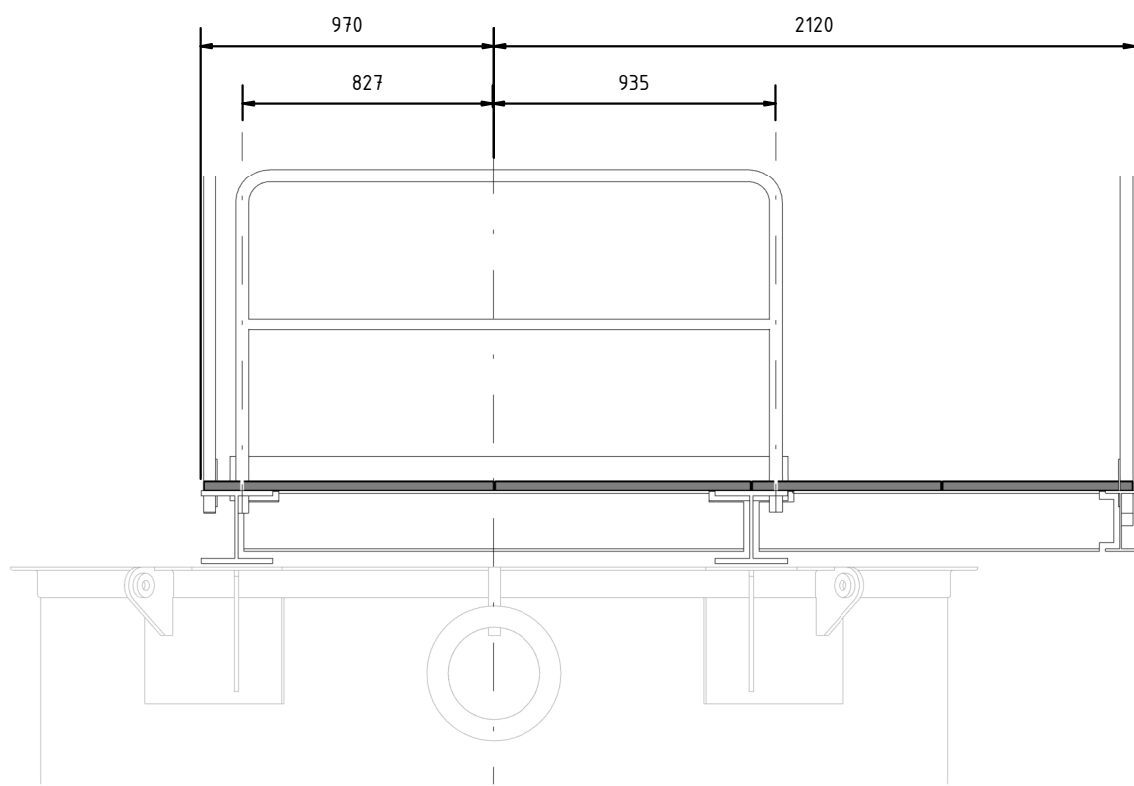
VIEW A
1 : 25



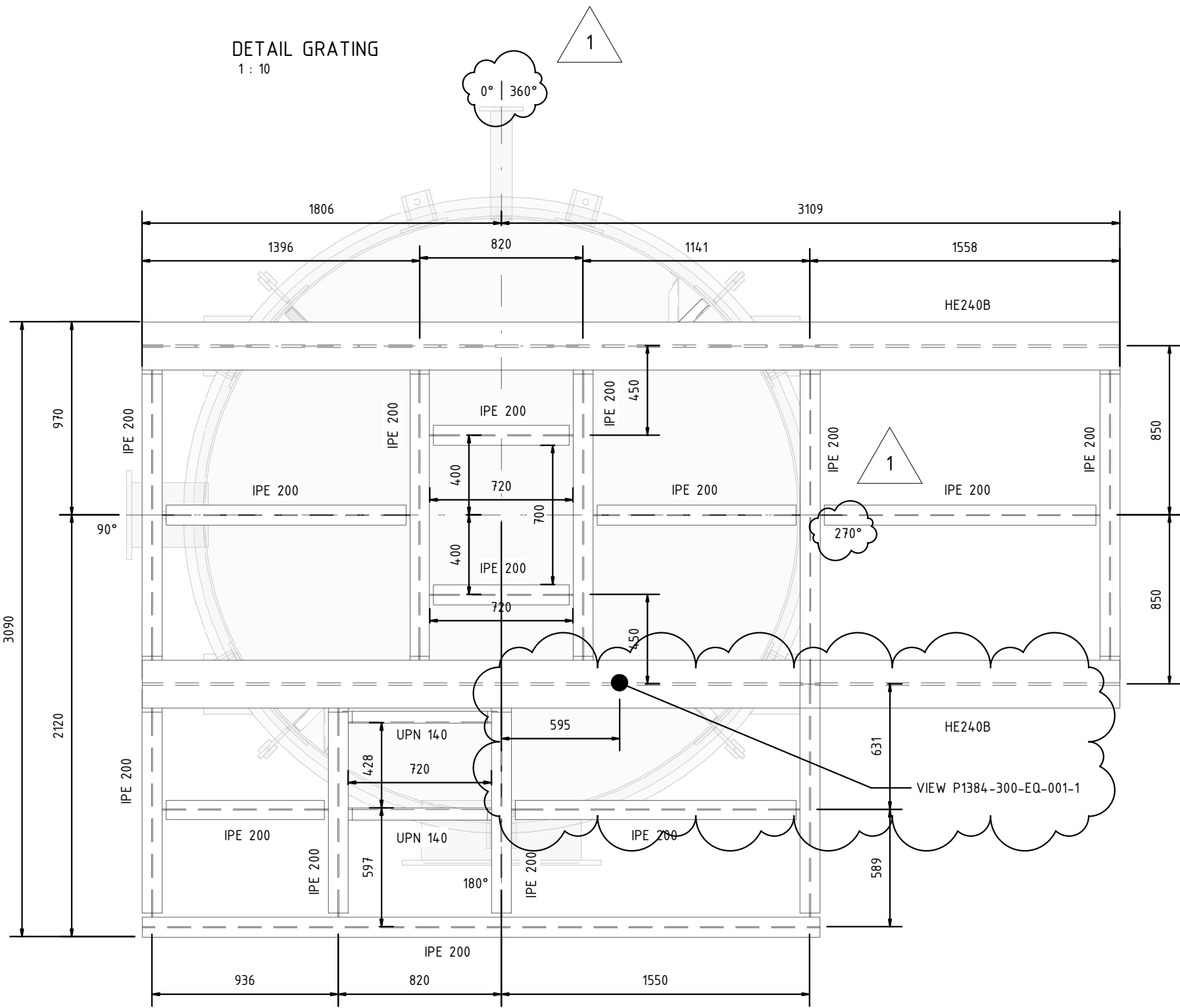
VIEW C
1 : 25



VIEW D
1 : 25






VIEW B
1 : 25



PLAN VIEW PLATFORM
1 : 25

- Notes:
- 1) AGITATOR VENDOR SELECTION IS PENDING. AGITATOR DATA, DETAILS AND AGITATOR CONNECTION PLATE DETAIL TO BE CONFIRMED AND PLATFORM DESIGN ADAPTED PRIOR FABRICATION.
 - 2) ALL MEMBERS TO BE S275JR STEEL.
 - 3) BOLT GRADE 8.8 SPUN GALVANIZED. WASHER BOTH SIDES AND DOUBLE NUT.
 - 4) THE PLATFORM SHALL BE WORKSHOP WELDED SUCH THAT THE LARGEST SINGLE ITEM TO BE TRANSPORTED TO SITE SHALL BE NO MORE THAN 25m WIDE AND 12m LONG FOR TRANSPORT. BIGGER ITEM SHALL BE ASSEMBLED ON SITE BY WELDING. ALTERNATIVE ADDITIONAL BOLTED JOINTS CAN BE PROPOSED BY MANUFACTURER UNDER DESIGN APPROVAL.
 - 5) WELDING INSPECTION PLAN TO BE ACCORDING WITH RMG PROCEDURE.
 - 6) CORROSION PROTECTION ACCORDING WITH DIN EN ISO 12944 CS-I ENVIRONMENT AND EXPECTED PLANT LIFE.
 - 7) GALVANIZED GRATING 30x30 MESH WITH 30x3 BEARING BARS SUITABLE FOR 5 KN/m2 LIVE LOAD.
 - 8) HANDRAILS TO BE ACCORDING WITH RMG STANDARD

1	CMV	16/10/2023	CMV	16/10/2023	ATB	16/10/2023	FOR CONSTRUCTION / AS NOTED
0	AMI	31/03/2023	JNA	31/03/2023	ATB	31/03/2023	FOR CONSTRUCTION
Rev.	Author/Date	Checked/Date	Approved/Date	Description			
Customer: JSC RMG Auramine LLC				Project: BEQTAQARI DETAIL ENGINEERING			
				Title: 300-TK-001_DETAIL DRAWING BULK ROUGH CONDITIONING TANK PLATFORM			
				3d model: P1384-300-RV-301-7-Flotation area - Equipment			
				Customer doc. code:			
Area:	300	Scale:	1:10,15,25	Format:	A1	Doc. code:	P1384-300-EQ-001-2
							Rev:

G
F
E
D
C
B
A
A1